

APALACHEE AUDUBON SOCIETY

Apalachee Audubon Society Mission Statement:

Protection of the environment through education, appreciation, and conservation.

NEWSLETTER OF THE APALACHEE AUDUBON SOCIETY, INC.

50TH ANNIVERSARY – MAY 2015

You are invited to

Apalachee Audubon Society's Annual Awards Banquet & 50th Anniversary Celebration

With Guest Speaker Eric Draper



Thursday, May 21, 2015
Dinner will begin at 6:30 pm



Dinner will be provided by Chef Tim Smith. This year's menu features meatloaf, mashed potatoes with gravy, vegetable medley, field peas, greens, tomatoes and okra, mac and cheese, and cornbread. Tickets are \$10 per person. They may be purchased in advance at Native Nurseries or Wild Birds Unlimited. If you wish to buy your ticket at the dinner, please call Tim at (850) 933-5979 by Monday, May 18th to make your reservation. Please come and bring a friend...non-members are welcome. For more information, please see www.apalachee.org.

Lafayette Presbyterian Church - 4220 Mahan Drive - Tallahassee, Florida



Eric Draper
Audubon Florida Executive Director

Banquet Guest Speaker: Eric Draper

“Building On a Legacy - Celebrating 50 Years of Service”

Please join us for this very special 50th Anniversary Celebration Banquet as Guest Speaker Eric Draper, Audubon Florida Executive Director and a Past-President of Apalachee Audubon, helps us honor the men and women who have helped build the Apalachee Audubon chapter over the past 50 years. Their service protecting and preserving the environment has left a legacy entrusted to us today. Eric will share some of the current challenges and opportunities before us and, as we celebrate the past successes together, we will have an opportunity to reaffirm our dedication to the work ahead as we begin the next 50 years.

Eric Draper, Executive Director of Audubon Florida, is recognized as a leading advocate for water resource protection, Everglades restoration, and land conservation. A Florida native, Eric previously served as National Audubon's Senior Vice President for Policy, staff director for the Florida

House of Representatives Majority Office, and government relations director of The Nature Conservancy's Florida program, where he led efforts to fund Florida's \$3 billion Preservation 2000 program and eleven local land conservation measures.

Current service includes appointment to the EPA's Environmental Finance Advisory Committee and Commissioner Putnam's Water Policy Advisory Committee. He serves on the boards of Sustainable Florida and the Florida Ocean Alliance. Previous service included the Clinton-Gore Transition Team, the Florida Soil and Water Conservation Council and the Florida Water Management District Review Commission.

Under Eric Draper's leadership, he has successfully led organizational growth for Audubon Florida, which employs 60 people with an annual budget of more than \$5 million. Audubon Florida enjoys the support of more than 30,000 members and chapters in 44 communities.

Apalachee Audubon Society, Inc.

2014 – 2015

Officers & Directors

All telephone numbers are in the 850 area code, unless otherwise noted.

President: Adrienne Ruhl 813 293-1081
Vice-President: Budd Titlow 320-6480
Secretary: Helen King 765-2488
Treasurer: Harvey Goldman 385-5222
Past-President: Seán McGlynn 570-1476

Directors:

Nick Baldwin 877-0249
Kathleen Carr 322-7910
Jim Cox 942-2489
Carol Franchi 459-2066
Ben Fusaro 297-2052
Pat Press 539-5765

Parliamentarian: Ben Fusaro

AAS Logo Design: Charlotte Forehand

Newsletter Editor: Suzanna MacIntosh

AASnewsletter2011-audubon@yahoo.com

Web Administrator: Kathleen Carr 322-7910

Apalachee Audubon Society, Inc.
P. O. Box 1237 - Tallahassee, FL. 32303

Apalachee Audubon Society, Inc. (AAS) is an all-volunteer 501(c)(3) tax exempt organization.

The success of our work depends upon your support.
All memberships and contributions are tax-deductible to the extent allowed by law.

This newsletter is published
by the Apalachee Audubon Society, Inc.
©2015 Apalachee Audubon Society, Inc.



For more information and to sign up for our AAS Google Groups email notification list, please see www.apalachee.org.

Join National Audubon Society for just \$20 a year & receive a year's free membership in the Apalachee Audubon Society and Audubon Florida!

Membership includes **Audubon**, National Audubon's bimonthly flagship publication. Each issue of this award-winning publication features beautiful photography and engaging journalism. Our Apalachee Audubon chapter newsletter and website along with Audubon Florida will keep you informed of local and statewide Audubon birding and conservation information, news and other nature-related events.

To pay for your membership (or gift membership) using a credit card, please call National Audubon's toll free membership number, 1-800-274-4201.

Please mention our chapter code, **E19**, for Apalachee Audubon to get credit for a new membership. You can also go to Apalachee Audubon's website and join online (click on "Join" in the left-hand column). If you prefer to pay by check, make your check payment to National Audubon Society and please include Apalachee Audubon's chapter code, **E19**. In your check memo section, please also indicate "For Audubon Membership (\$7.50 for Magazine)" and mail to:

National Audubon Society
P. O. Box 422249
Palm Coast, FL 32142-2249

Allow 4-6 weeks for the arrival of your first issue. The cost of membership is tax deductible except for \$7.50 (which is allocated to Audubon magazine).

Inside This Issue



Awards Banquet Invitation	1
Banquet Guest Speaker, Eric Draper	1
Slate of Officers & Directors	3
Silent Auction of Karl Zerbe Serigraph	6
Take a Beach Walk & Help Our Shorebirds	7
May Field Trips	8
Birdathon	8
Wakulla Wildlife Festival Photographs	9
Past AAS Officers, Directors, Committee Chairs	10

2014-2015 Committee Chairs

Anniversary Celebration

Suzanna MacIntosh & Karen Wensing
Helen King, Seán McGlynn & Budd Titlow

Audubon Adventures

Judy Goldman

Awards Committee

Nick Baldwin

Birdathon

Harvey Goldman

Conservation Committee

Jan Bordelon & Elizabeth Platt

Education Committee Chairs

Carol Franchi & Pat Press

Field Trips

Helen King

Hospitality

Pam Flory & Elizabeth Platt

Membership

Kathleen Carr

Newsletter

Suzanna MacIntosh

Nominating Committee

Seán McGlynn

Program Committee

Jim Cox

Publicity

Kathleen Carr

St. Marks NWR Butterfly Pollinator Garden

Ann Bruce

Wildlife-Friendly Yards Tour Committee

Ann Bruce & Tammy Brown



"Humankind has not woven this web of life. We are but one thread within it. Whatever we do to the thread, we do to ourselves. All things are bound together. All things connect." ~ Chief Seattle

Slate of Officers and Directors

We will be voting for the Slate of Officers and Directors at the Annual Banquet on May 21, 2015. *Apalachee Audubon's* Secretary, Treasurer and Directors are elected for two-year terms. Directors Nick Baldwin, Jim Cox, Ben Fusaro, and Kathleen Carr will be returning for the 2015-2016 term. Following are next year's nominations who have been selected by this year's nominating committee.

2015 - 2016 Officers

President: Budd Titlow

Vice-President: Seán McGlynn

Secretary (2-year term): Donna Legare

Treasurer (2-year term): Harvey Goldman

Past-President: Adrienne Ruhl

New Directors 2015 – 2017 (2-year terms)

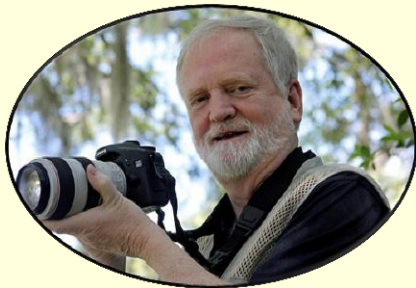
Lilly Anderson-Messec

John Outland

Karen Willes

Rob Williams

Introducing Apalachee Audubon Society's Slate of Officers & Board Members



Budd Titlow, President-Elect: A Professional (Emeritus) Wetlands Scientist and Wildlife Biologist, Budd Titlow has operated *NATUREGRAPHS: Freelance Photography and Writing* for more than thirty-seven years. During this time, he has published more than 200 articles and 5,000 photographs. Throughout his career, Budd has shared his love of photography and nature by presenting/leading more than 100 seminars, workshops, and field trips nationwide. He has also conducted surveys and led birding field trips on sites throughout the eastern United States. The Globe-Pequot Press recently published Budd's latest book, *Bird Brains: Inside the Strange Minds of Our Fine Feathered Friends*.

Budd has authored two other natural history photo books: *Rocky Mountain National Park – Beyond Trail Ridge* and *Seashells – Jewels from the Ocean*. Budd is currently working as a Food Safety Consultant for local farmers while teaching birding/ecology courses at the Tallahassee Senior Center and Florida State University's Osher Lifelong Learning Institute, OLLI. *The Tallahassee Democrat* is also featuring his birding photo-essays each week in their Friday *Home and Garden* section. Budd has a B.S., Biology, Florida State University, 1970 & M.S., Wildlife Ecology, Virginia Tech, 1973.



Seán McGlynn, Vice-President: Dr. Seán McGlynn specializes in aquatic habitat characterization, the study of water and sediment quality, aquatic plants and algae, and the higher organisms, like birds and other animals which are specially adapted to life in wetter habitats. He has performed hydrographic studies all over Florida, from the Peace River to Pensacola. Dr. McGlynn has a nationally certified environmental laboratory, McGlynn Laboratories Inc., www.mcglynnlabs.com, a nationally accredited environmental laboratory (NELAC), certified by the EPA for the analysis of microbiology nutrients, metals and organic hydrocarbons and approved by FDEP for TMDL sampling of surface waters for priority pollutants and various biological indices.

Continued on page 4

Continued from page 3 - Dr. Seán McGlynn, Vice-President

With expertise in sampling, analysis, hydrographic modeling, dye studies, habitat assessment and restoration as well as database assessment, quality assurance and quality control and environmental resource permitting, McGlynn Laboratories offers a wide range of expertise in environmental clean-up and restoration and, most importantly, active environmental management so that restorations are not necessary. Dr. McGlynn serves as Chair of the Wakulla Springs Alliance, as Vice-President of Friends of Wakulla Springs and as President of the NW Florida Chapter of the Florida Lake Management Society.



Donna Legare, Secretary: Donna Legare has co-owned Native Nurseries with her husband, Jody Walthall, since its inception in 1980. She has spent most of these years both at her job and in her volunteer work fulfilling the mission of Native Nurseries - to bring people and nature together in their yards and gardens. Donna earned a degree in Wildlife Ecology from the University of Florida's School of Forest Resources and is co-author of *Planting a Refuge for Wildlife*, a Florida Wildlife Commission publication. (Editor's note: Learn much more and how Chuck Salter, 2nd President of AAS, helped inspire Donna and Jody to open Native Nurseries, under "More About Us" at www.nativenurseries.com.)



Harvey Goldman, Treasurer: Dr. Harvey Goldman retired from the FSU Physics Department in 2004. He has kept the Apalachee Audubon books straight and paid the bills for over 18 years. Every year he and 4 women regularly hit the road on Apalachee Audubon's Birdathon--as a team sometimes known as Harvey's Harriers and this year known as the *great* team, Four Gulls and a Tern, with Harvey and Judy Goldman, Karen Wensing, Kathy Besbekos and Ann Bruce.

Harvey enjoys spending time with his wife, Judy, and visiting his grandkids, hitting at tennis, and travel.



Adrienne Ruhl, Past-President: Adrienne Ruhl, 2014-2015 Apalachee Audubon President, is the Contract and Grants Administrator for Audubon Florida's Coastal Program.

A Baltimore native, her military family moved frequently, settling in Florida in the early 1990s. She is a graduate of Florida State University where she studied Psychology and Music. In addition to volunteering, Adrienne is passionate about the outdoors and can be found running, biking, swimming and leading hikes in her free time.



Lilly Anderson-Messec, Director: Lilly Anderson-Messec started working at Native Nurseries in 2006 and is now the general manager. She is inspired by the fascinating and complex relationships between native plants and native wildlife. A passionate vegetable gardener as well as a native plant enthusiast, she teaches many workshops at Native Nurseries on these subjects as well as writing articles for the Tallahassee Democrat. Born and raised in Tallahassee, Lilly has also lived in Montana and Colorado. In her free time she enjoys exploring the ecologically rich and diverse regions of the Panhandle, observing and photographing plants and wildlife, as well as swimming and kayaking our beautiful springs and rivers.

Continued on page 5

Continued from page 4



John Outland, Director: John Outland is retired after 34 years with the Florida Department of Environmental Protection in the Office of Ecosystem Projects and is recognized for his outstanding work on Everglades restoration projects. John is a longtime Leon County resident who lives near and is a "Friend of Lake Lafayette".



Karen Willes, Director: Karen Willes is a recently retired musician. Before her retirement in August 2014, she was Organist at East Hill Baptist Church from 1972-2005 and Minister of Music from 2005-2014. In addition, she taught Choral Music in Grades K-12 at Maclay School during 28 of those years -- 1977-2005. She holds degrees in music from Stetson University (B.M.) and Florida State University (M.M). In addition to her career as a musician, Karen enjoys spending time photographing wildlife, especially birds. Her images have been published by The Nature Conservancy, Florida Wildlife Federation, St. Marks NWR, Operation Migration, International Crane Foundation, St. Augustine Alligator Farm Zoological Park, Camp Denali, & The MILEPOST. Karen has volunteered with St. Marks NWR, Operation Migration, & Florida Wildlife Federation.

Last May Karen received a Community Leadership Award from Apalachee Audubon Society for her education efforts and protection of Whooping Cranes 11-09 & 15-09 that have become known as the "Cow Pond Cranes." With the help of Apalachee Audubon Society members and others, she has documented these two cranes twice daily during their overwinter months for the last two years. This year, blog articles about her "citizen scientist" work with the cranes were written by Susan Cerulean and Kathlin Sickel. Karen has donated the use of her images to Florida Wildlife Federation for three sets of notecards including the images for the newly-published 2015 Spring Cards.



Rob Williams, Director: After receiving his Bachelor of Arts in Economics from the University of Michigan and his Juris Doctorate from Harvard Law School, Rob joined Florida Rural Legal Services in Immokalee, Florida, in 1975 as a staff attorney, practicing and litigating cases brought under Farm Labor Contractor Registration Act and the Migrant and Seasons Agricultural Worker Protection Act.

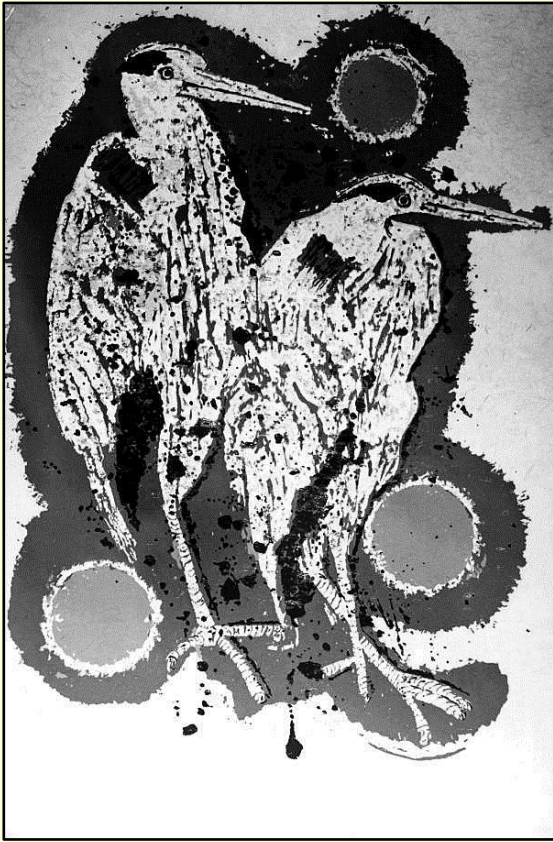
In 1993, he received the Florida Bar Association's Legal Aid Public Service Award and in 2012 President Barack Obama presented Rob with the "Champions of Change: Cesar Chavez Legacy" award in recognition of his service to others, knowledge, innovation, acceptance of all people, respect for life and the environment, and dedication to improving the lives of others. He was honored at a White House ceremony, along with the nine other recipients of the award.

Rob is the director of the Migrant Farmworker Justice Project for Florida Legal Services, Inc. and is based in Tallahassee. He currently serves on the board of the Wakulla Springs Alliance and in an "of counsel" role on the Center for Earth's Jurisprudence Springs Initiative.

Rob has been an avid birder for his entire life and has been a member of Audubon for over 25 years. He travels often in search of new birds for his "life list."

Apalachee Audubon Society Celebrates 50 Years with a Banquet Showing and Auction of Karl Zerbe's Work of Art, "Two Egrets"

By Jan Bordelon



Two Egrets by Karl Zerbe

Photo courtesy State Archives of Florida, Florida Memory,
<http://floridamemory.com/items/show/78701>

from Central and South America. As a member of the American Ornithologists Union, he provided the first photographic proof to the American Ornithology Society in 1958 that the Greater White-fronted Geese (*Anser albifrons*) could be found at St. Marks NWR. He was also among the first to photograph and record the Eared Grebe (*Podiceps caspicus*) in Florida.

Apalachee Audubon Society expresses their sincere appreciation to the generosity of LeMoyne Art Foundation and the efforts of Linda Van Beck, a Tallahassee artist, in providing Dr. Zerbe's wonderful serigraph to help us celebrate the importance and beauty of birds in art and in our environment.

It has been said that through Zerbe's eyes his birds reflect very human characteristics - joy or playfulness - despair or frustration, the lights and shadows of human existence. Dr. Zerbe's art and life symbolized his environmental consciousness and his deep belief in the interdependency of all life forms.

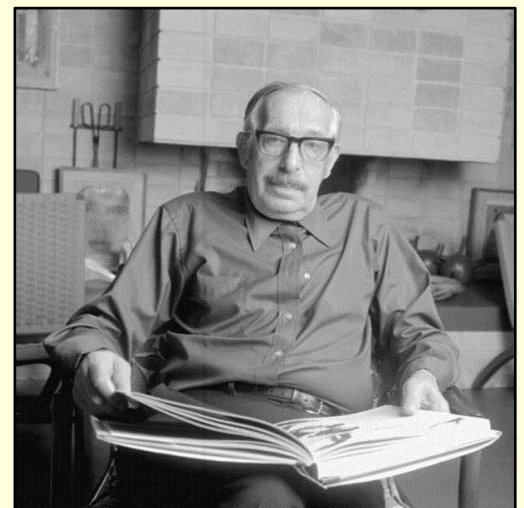
Apalachee Audubon Society will celebrate its 50th Anniversary with a showing and silent sealed bid auction of one of Karl Zerbe's (1903-1972) famous serigraphs, *Two Egrets*, at the Annual Awards Banquet on May 21st.

Karl Zerbe, a native of Berlin, Germany, came to Tallahassee, Florida, in 1955 as a professor in the Fine Arts Department of Florida State University. An eminent artist, Dr. Zerbe's works are represented in private and public collections and galleries throughout the world.

Karl Zerbe's love for birds and wildlife originated from his childhood in Germany and continued through his work and life. He became absorbed in studying birds and their habits, particularly migratory birds, and began painting birds in the 1950's. His portfolio of birds for a traveling exhibition contained serigraphs of native Florida birds, including ibis, ducks, owls, herons, egret, and eagles, among others.

Dr. Zerbe and his wife, Marion, were both avid "birders." Two of their favorite observation spots were Wakulla Springs and St. Marks National Wildlife Refuge, with its abundance of birds. In addition to their fascination for bird-watching in Florida and other coastal areas of the United States, they explored Brazil, Trinidad, Jamaica, Canada, and myriad exotic locations, in their quest to add to their Life List of birds.

One of the earliest members of Apalachee Audubon and a longtime member of the Florida and National Audubon Societies, Dr. Zerbe's avid enthusiasm for birding was reflected in his films of hummingbirds



Karl Zerbe, May 25, 1970

Courtesy State Archives of Florida, Florida Memory,
<http://floridamemory.com/items/show/10248>



**Bird Stewards are Critical
to the Conservation of Beach-Nesting Birds
Join Us for a Beach Walk
By Bonnie Samuelson**



Join Audubon Florida and partners across the Panhandle for **FREE** guided walks on area beaches.

The more bird stewards we have volunteering at our local beaches,
the better the chances for a successful breeding season!

*Walks scheduled **May 9 & 10** and **May 16 & 17** at area beaches across the Panhandle.*

Contact FLConservation@audubon.org to learn more.

During the spring and summer, Gulf Coast beaches come alive with nesting seabirds and shorebirds. Noisy colonies of Least Terns and Black Skimmers swirl above the sand. Wilson's Plover and Snowy Plover parents stand alert while their tiny, fuzzy youngsters crouch in the dune grasses or feed along our shorelines. For most people, the beach is an area to play and relax. For several species of birds, the beach is the only place they can nest and raise their young.

Disturbances of the birds – especially disturbances making the parents take flight – threaten the survival of the young. When the birds are disturbed, whether by people coming close or dogs walking nearby, the eggs and chicks on the beach are exposed to the hot killing sun and ever-present predators like crows, gulls and raccoons. If the adults are disturbed repeatedly, they may even abandon their nests.

YOU can help prevent this by volunteering as a Bird Steward.

What does it take to be a bird steward?

The most important thing you need to be a bird steward is the desire to help our beach-nesting birds have a successful nesting season! Once you have this, there are many people that will help supply you with the information you will need.

In general, these are the important details:

- *Bird stewarding mainly involves sitting near marked nesting areas at local beaches, serving as an "ambassador for the birds." This may involve educating people interested in the birds or reminding individuals to avoid disturbing the birds.*
- *Volunteers usually work 4-hour shifts at a local beach, or as often as possible (every shift helps), particularly on weekends and holidays.*
- *Many volunteers bring their own chairs and sunshades, but these may be available for you to use at some locations. Binoculars and spotting scopes may be provided at some locations too.*
- *You will be provided with a short training session so you can learn about the birds nesting at your location and the role of the bird stewards in their protection.*
- *You will be provided with a handout that summarizes the key points about the birds and your role as a steward.*



Black Skimmer Family
Photo by Rick Greenspun

**Learn More about Audubon Florida's
Coastal Bird Stewardship Program
Your Help Makes A Difference!**

Learn more about Coastal Conservation at <http://fl.audubon.org>
and statewide efforts at www.flshorebirdalliance.org.

Enjoy these beautiful videos as you learn more:
<https://www.youtube.com/playlist?list=PLMTyD5gKJcFo75F1vXFW8YamRdPcAmv6>

*Bonnie Samuelson is Project Coordinator for Audubon Florida's
Coastal Bird Stewardship Program in the Florida Panhandle.*



May Birding Field Trips with Helen King

Come bird with us when you can!

Happy Birding!

We have some great field trips planned for you. We hope you will join us. Please email me, Helen King, at thekingsom@gmail.com if you plan to attend at least 24 hours ahead and please indicate if you are a willing driver for either trip.

Friday, May 15: Hickory Mound WMA

Meet at 7:30 a.m. at the main parking lot of the St. Marks Rail Trail on Woodville Highway. This will mainly be a driving tour. We will return for a late lunch.

Saturday, May 23: St. Marks National Wildlife Refuge

Meet at 8 a.m. at the Visitor Center parking lot.

For notification of coming field trips, please subscribe to Apalachee Audubon's Google Groups email notification list at www.apalachee.org. Birding reports are recorded at eBird and with Apalachee Audubon.



Black-crowned
Night-Heron
Courtesy David Kilby

Birdathon 2015

Yes, I want to support Birdathon 2015!

Every dollar you give stays in the community to support environmental education and wildlife habitat.

Name: _____

Address: _____

Phone: _____ Email: _____

Sponsorship amount: \$25 _____ \$50 _____ \$100 _____ Other _____

Please make your check payable to **Apalachee Audubon Society** and mail to:
Apalachee Audubon Society - P. O. Box 1237 - Tallahassee, FL 32302-1237

Thank You for Sponsoring Birdathon!

Apalachee Audubon is an all-volunteer organization and the success of our work depends upon your support. Although AAS works collaboratively with the National Audubon Society on issues of mutual concern, very little funding comes from National Audubon. Funds raised during Birdathon helps fulfill Apalachee Audubon's mission.

Apalachee Audubon Society, Inc. is a nonprofit, 501(c)(3) organization; all contributions are tax-deductible as allowable by law.

Wild Birds Unlimited



**Everything for the birds
and the serious birder!**

NATURE GIFTS
OPTICS ~ FIELD GUIDES ~ FEEDERS
BIRDBATHS ~ SEED ~ NEST BOXES

1505-2 Governor's Square Blvd. Tallahassee, FL 32301
(850) 576-0002 tallahassee.wbu.com



Native Nurseries

- WILD BIRD SHOP
- WILDLIFE GARDENING
- LANDSCAPE DESIGN

1661 Centerville Rd., Tallahassee, FL
850-386-8882 NativeNurseries.com



A Few Photos from April 18, 2015
 Wakulla Wildlife Festival with AAS 50th Anniversary Celebration



Photos, top left clockwise: Wakulla Springs Puppet Parade with Wakulla Springs Park Services Specialist Jackie Turner (LK); Audubon Florida Executive Director Eric Draper (LK); AAS Treasurer Harvey Goldman with Eric Draper (NB); AAS Display with Karen Wensing, background left (SM); (center, l to r) AAS President-Elect Budd Titlow, Audubon Florida Board Member Mike Sheridan, AAS Past-President Seán McGlynn (NB); AAS President Adrienne Ruhl with AAS Secretary and Field Trip Chair Helen King, background left (LK) ; AAS Tent with Karl Zerbe serigraph & informational poster with AAS Board Member & Education Committee Co-Chair Carol Franchi helping with children's activities (NB)

*Special Thanks to Lou Kellenberger (LK) and Nick Baldwin (NB) for sharing their great photographs!
 We'll have more photographs for you in the next newsletter...*

1964 - 2015

Apalachee Audubon Society Presidents, Officers, Board Members & Committee Chairs

Compiled by Karen Wensing & Suzanna MacIntosh

“Leadership among volunteers is rather dependent in beautiful ways on shared values and commitment, on understood visions expressed in workable mission statements, and on moral purpose. When people work for love, leaders help them move toward potential and service.”

– Max De Pree

In the fall of 1963 Florida Audubon Executive Director Russ Mason met with Dr. Huey B. Long and other leaders in the Tallahassee-Big Bend area to work towards forming a local chapter of the Florida Audubon Society. The Apalachee Audubon Society’s Charter was signed on December 7, 1963 by Kenneth P. Morrison, President of Florida Audubon. Florida Audubon Executive Director Russ Mason presented this to Dr. Huey B. Long.

1964 – 1965 – 1966

Huey B. Long, President

Mrs. A. D. Aldrich & O. Earle Frye, Vice-Presidents; William R. Kidd, Secretary-Treasurer
The Apalachee Audubon Society was established with a charter membership of 26 persons.

Some of the early members include: Betty McCord, Chuck Salter, Malcolm Johnson,
Mr. and Mrs. Karl (Marion) Zerbe, Dr. Melvina Trussell, Tom Morrill, and Bill Miller.

1967–1968–1969

Chuck Salter, President

19--

Bill Craig, President

1973

Albert P. Simmons, President

“Hux” Coulter, V-P; Helen Grissett and Barbara McCrimmon, Co-Secretaries; Chuck Salter, Treasurer
Board: Dr. Henry Stevenson, 1971-74; Mrs. Spurgeon Camp, 1971-74; Lee Goulding, 1972-75;
Mrs. Eunice Christensen, 1972-75

1974

C.* O. Dunning, President (*Carl)

1975-1976

Helen Grissett, President

David LaHart, Vice-President; Mary Nourse, Secretary; Ellen Roberts, Treasurer
Board: Eunice Christensen, Katie Moeller, Marvin Cook, Henry Stevenson, Charles Salter, Richard Husband
Committees: Membership, Peggy Boggs; Tom Harris, Field Trips; James Greene, Program;
Lecture Series, Jean Bordeaux

1976-1977

Tom Harris, President

Katie Moeller, Vice-President; Mary Nourse, Secretary; Hazel Beasley, Treasurer
Board: Don & Martha O’Connell, Marvin Cook, Jim Greene, Al Simmons
Committees: Newsletter, Nancy Sawyer; Hospitality, Katie Moeller; Youth & Education, Helen Grissett;
Membership, Dorothy Leukanech; Program, Jim Greene;
Field Trips, Bill Stephens; Conservation, Mark Gamula

1977-1978

R. Marvin Cook, President
Charles Gray, Vice-President; Mary Nourse, Secretary; Clair Davis, Treasurer
Committees: Newsletter, Nancy Sawyer; Field Trips, Barry Williams; Program, James C. Greene;
Education, Helen Grissett; Publicity, Donna C. Sumner; Membership, Dorothy Leukanech

1979-1980

Barry C. Williams, President
Judy L. Spier, V.-P.; Nancy Sawyer, Secretary; J. C. Gayhartt, Treasurer
Committees: Newsletter, Judy L. Spier; Program, Sharon Clark; Education, Helen Grissett; Publicity, Jean
Smith; Membership, Mary Nourse; FAS Liaison, James L. Greene; Bird Notes, Mike Doyle; Refuges, Mary
Tebo; Blue Birds, Donna Legare
(The Apalachee Audubon Society was incorporated on April, 30, 1980.)

1980-1981

Robin Carter, President
J. C. Gayhartt, V.-P.; Josephine Tharpe, Secretary; Barry Williams, Treasurer
Committees: Newsletter, Nancy Sawyer; Membership, Louise Dunning; Bird Notes, Todd Engstrom

1981-1982

Robin Carter, President
J. C. Gayhartt, V.-P.; Kathy Cavanaugh, Secretary; Barry Williams, Treasurer
Committees: Newsletter, Donna Legare & Steven Carter-Lovejoy; Membership, Steven Carter-Lovejoy;
Bird Notes, Todd Engstrom

1982-1983

Steve Carter-Lovejoy, President
Todd Engstrom, V.-P.; Kathy Cavanaugh, Secretary; Ron Christen, Treasurer
Board: Dana Bryan, Janice Carter-Lovejoy, Cynthia Christen, Debbie Hoffman, Susan Mashburn

1983-1984

Dana C. Bryan, President
Cynthia Christen, V.-P.; Gloria Claiborne, Secretary; Ron Christen, Treasurer
Board: Elspeth Stowell, Kathy Cavanaugh, Tracy Andreae, Ellen Slater, Lavinia Short
Newsletter, Mary Ann Neal & Paula Pharr
Committees: Conservation, Cynthia Christen; Membership, Tracy Andreae; Field Trips, Dana Bryan;
Publicity, Kathy Cavanaugh

1984-1985

Dana C. Bryan, President
Kathy Cavanaugh, V.-P.; Gloria Claiborne, Secretary; Ron Christen, Treasurer
Board: Ginny Vail, Don Morrow, Elspeth Stowell, Cynthia Christen, Susan Drake
Newsletter, Gary & Peggy Griffin
Committees: Conservation, Cynthia Christen; Education, Dana Bryan; Membership, Elspeth Stowell;
Outings, Ron Christen; Programs, Dana C. Bryan; Publicity, Kathy Cavanaugh;
Volunteers, Cynthia Christen

1985-1986

Dana C. Bryan, President
Kathy Cavanaugh, V.-P.; Robin Will, Secretary; Gary Griffin, Treasurer
Board: Ginny Vail, Elspeth Stowell, Kathleen Rose, Don Morrow, Susan Drake
Newsletter, Peggy Griffin

1986-1987

Cynthia Christen, President
Dana C. Bryan, V-P; Robin Will, Secretary; Gary F. Griffin, Treasurer
Board: Susan Drake, Kathleen Rose, Joe Reinman, Brenda Scott, Jane Storm
Committees: Newsletter, Peggy Griffin; Conservation, Elspeth Stowell; Education, Dana C. Bryan; Membership,
Brenda Scott; Programs – Trips , Ron Christen; Publicity, Gary F. Griffin;
Florida Audubon Chapter Representative. Joe Reinman

1987-1988

Cynthia Christen, President
Dana Bryan, V. -P.; Robin Will, Secretary; Gary F. Griffin, Treasurer
Board: Kathleen Rose, Joe Reinman, Elspeth Stowell, Jane Storm, Gloria Claiborne

1988-1989

Elspeth Stowell, President
Dana Bryan, V.-P.; Robin Will, Secretary; Gary F. Griffin, Treasurer
Board: David Arnold, Dave Eslinger, Jane Storm, Cynthia Christen, Gloria Claiborne

1989-1990

David Arnold, President
Elspeth Stowell, V. P.; Cynthia Christen, Secretary; Gary Griffin, Treasurer
Board: Dana Bryan, Bob Walker. Sally Jue, Jane Storm, Dave Eslinger

1990-1991

David Arnold, President
V. P. ? ; Cynthia Christen, Secretary; Gary Griffin, Treasurer
Board: Gail Fishman, Gino Snodgrass, Cathy Sellers
Committees: Membership, Sally Jue; Education Chair, Robin Will; Pamela Hammock, Conservation

1991-1992

Bob Henderson, President
Cynthia Christen, V.-P.; Sally Jue, Secretary; Gary Griffin, Treasurer
Board: Alan Strowd, Cathy Sellers, Gail Fishman, Ken Echternacht, Connie Cauley
Committees: Newsletter Editor, Tom Swihart & Newsletter Coordinator, Ken Echternacht; Field Trip
Coordinator, Jay LaVia; Membership, Donna Wells; Hospitality, Cathy Sellers; Program, Alan Strowd;
Education, Connie Cauley; Conservation, Ken Echternacht; Local Government Issues, Cathy Sellers;
Birdathon, Dawn Hummer; Audubon Adventures, Robin Will;
Chapter Representative to FAS, Ken Echternacht

1992-1993

Robert K. Henderson, President

Cynthia Christen, V.-P.; Cathy Sellers, Secretary; Donna Wells, Treasurer

Board: Sandy Beck, Connie Cauley, Ken Echternacht, Don Kelly, Betsy Sullivan

Committees: Newsletter Editor, Tom Swihart & Newsletter Coordinator, Ken Echternacht;

Audubon Adventures, Sally Jue; Birdathon, Cynthia Christen & Cathy Sellers;

Education, Cathy Cauley ('92) & Jane Storm ('93); Field Trip Coordinator, Cathy Sellers; Highway Beautification, Peg Griffin; Local Government Issues, David Therique; Conservation, Ken Echternacht; Publicity, Gary Griffin; Chapter Representative to FAS, Bob Henderson

1993-1994

Bob Henderson, President

Cynthia Christen, V.-P.; Cathy Sellers, Secretary; Donna Wells, Treasurer

Board: M. B. Adelson, Don Kelly, Janisse Ray, Pat Simmons, David A. Theriaque

Committees: Newsletter Editor, Tom Swihart; Audubon Adventures, Sally Jue; Birdathon Co-Chairs, Cynthia Christen and Cathy Sellers; Conservation, Cathy Sellers; Education, Pat Simmons; Highway Beautification Co-Chairs, M. B. Adelson & Pat Simmons; Local Government Issues, David A. Theriaque; Membership, Donna Wells; Publicity, Janisse Ray; Chapter Representative to FAS, Cathy Sellers; Partners-In-Flight, Harry Hooper

1994-1995

Cathy Sellers, President

Janisse Ray, V-P; Harry Hopkins, Secretary; Pat Simmons, Treasurer

Board: Jay Alexander, David Best, Bob Henderson, Dean Jue, Jo Penrose

Committees: Education, Dee Wilder

1995-1996

Cathy Sellers, President

Harry Hooper, V-P; Pat Simmons, Secretary/Treasurer

Board: Jay Alexander, Bob Henderson, Dean Jue, Janisse Ray, Karen Wensing, Dee Wilder

Committees: Newsletter Editor, Cathy Sellers; Audubon Adventures, Sally Jue; Birdathon, Bob Henderson & Cathy Sellers; Conservation Chair, Bob Henderson; Education, Dee Wilder; Highway Beautification, Pat Simmons; Membership, Donna Wells; Publicity, Karen Wensing; Chapter Representative to FAS, Cathy Sellers; Partnership-In-Flight, Harry Hooper

1996-1997

Kevin Songer, President

Leslie Paugh, V-P; Harvey Goldman, Treasurer; Karen Wensing, Secretary

Board: Jay Alexander, Jennifer Eichelberger, Bob Henderson, Dean Jue, Judy Rice, Pat Simmons

Committees: Education & Field Trips, Jay Alexander; Newsletter Editor, Jennifer Eichelberger; Conservation, Bob Henderson; Membership, Dean Jue; Publicity, Pat Simmons

1997-1998

Bob Henderson, President

Elizabeth Fairbanks, V-P; Harvey Goldman, Treasurer; Donna Wells, Secretary

Board: Jim Cox, Jim Crews, Judy Rice, Jim Shelton, Pat Simmons

Committees: Birdathon & Hospitality, Beth Nichols; Conservation, Jim Cox; Education, Ellen Shelton; Membership, Jim Crews; Newsletter, Bob Henderson; Publicity, Judy Rice; Special Projects, Pat Simmons; Field Trip Coordinator, Jim Shelton; Chapter Rep to FAS, Jim Crews

1998-1999

Jim Shelton, President

Roger Atchison, V-P; Harvey Goldman, Treasurer; Donna Wells, Secretary

Board: Marvin Collins, Jim Crews, Ed Gartner, Joe Newton, Judy Rice

Committees: Birdathon, Beth Nichols; Conservation, Roger Atchison; Education, Ellen Shelton; Hospitality, Ed Gartner; Membership, Jim Crews; Newsletter, Bob Henderson; Publicity, Judy Rice; Field Trip Coordinator, Jim Shelton; Chapter Rep to FAS, Jim Crews

1999-2000

Jim Shelton, President

Jim Crews, V-P; Harvey Goldman, Treasurer; Ellen Shelton, Secretary

Board: Mary Blakeslee, Marvin Collins, Bob Cross, Hans Van Tol, Robin Will

Committees: Birdathon, Beth Nichols; Conservation, Marvin Collins; Education, Ellen Shelton; Hospitality, Ed Gartner; Membership, Jim Crews; Newsletter, Val Weeks; Publicity, Hans Van Tol & Judy Rice; Field Trip Coordinator, Jim Shelton; Chapter Rep to FAS, Jim Crews

2000-2001

Jim Crews, President

Bob Cross, V-P; Harvey Goldman, Treasurer; Ellen Shelton, Secretary

Board: Bob Daniels, Marvin Collins, Bill Lowrie, Larry Thompson, Hans Van Tol

Committees: Birdathon, Larry Thompson; Conservation, Marvin Collins; Education, Ellen Shelton; Hospitality, Ed Gartner; Membership, Harvey Goldman; Newsletter, Val Weeks; Publicity, Hans Van Tol; Field Trips, Jim Shelton; Ex-Officio, Sierra Club Liaison, Grayal Farr

2001-2002

Larry Thompson, President

Open, V-P; Harvey Goldman, Treasurer; Jim Crews, Secretary

Board: Bob Daniels, Marvin Collins, Bill Lowrie, Hans Van Tol

Committees: Birdathon, Larry Thompson; Conservation, Marvin Collins; Education, Ellen Shelton; Hospitality, Ed Gartner; Membership, Harvey Goldman; Newsletter, Val Weeks; Publicity, Hans Van Tol; Field Trips, Jim Shelton; Ex-Officio, Sierra Club Liaison, Grayal Farr

2002-2003

Larry Thompson, President

Eric Draper, V-P; Harvey Goldman, Treasurer; Jim Crews, Secretary

Board: Marvin Collins, Bill Lowrie, Karen Wensing

Committees: Conservation, Eric Draper; Chapter Rep to State Board, Larry Thompson; Development, Larry Thompson; Education, Ellen Shelton; Hospitality, Vacant; Membership, Karen Wensing; Newsletter, Val Weeks; Publicity, Judy Rice; Population, Harvey Goldman; Field Trips, Marvin Collins; Programs, Marvin Collins; St. Marks NWR Liaison, Robin Will; Ex-Officio, Sierra Club Liaison, Grayal Farr; Webmaster, Hans Van Tol

2003-2004

Open, President

Eric Draper, V-P; Harvey Goldman, Treasurer; Jim Crews, Secretary; Larry Thompson, Past President

Board: Marvin Collins, Sally Jue, Bill Lowrie, Karen Wensing, Bonnie Wright

Committees: Conservation, Eric Draper; Chapter Rep to State Board, Larry Thompson; Education, Ellen Shelton; Hospitality, Elizabeth Platt; Membership, Karen Wensing; Newsletter, Val Weeks; Publicity, Judy Goldman; Population, Harvey Goldman; Field Trips, Marvin Collins; Programs, Marvin Collins; St. Marks NWR Liaison, Robin Will; Ex-Officio, Sierra Club Liaison, Grayal Farr; Webmaster, Open

2004-2005

Eric Draper, President

Sally Jue, V-P; Harvey Goldman, Treasurer; Open, Secretary; Larry Thompson, Past President

Board: Ray Bieber, Marvin Collins, Grayal Farr, Kim Libroth, Bill Lowrie, Jim Shelton, Karen Wensing, Bonnie Wright

Committees: Conservation, Eric Draper; Chapter Rep to State Board, Larry Thompson; Education, Judy Goldman; Finance, Ray Bieber; Hospitality, Elizabeth Platt; Membership, Karen Wensing; Newsletter, Bill Lowrie; Publicity, Kim Libroth; Field Trips, Marvin Collins; Programs, Marvin Collins; St. Marks NWR Liaison, Robin Will; Ex-Officio, Sierra Club Liaison, Grayal Farr; Webmaster, Hans Van Tol

2005-2006

Eric Draper, President

Sally Jue, V-P; Harvey Goldman, Treasurer; Elizabeth Platt, Secretary

Board: Marvin Collins, Kathy Hartley, Kim Libroth, Elizabeth Vigil, Karen Wensing

Committees: Big Bend Environmental Forum Liaison, Bob Henderson; Conservation, Eric Draper; Development, Open; Education, Judy Goldman; Finance, Open; Hospitality, Open; Membership, Kathy Hartley; Newsletter, Donna Kay Tharpe; Population, Harvey Goldman; Publicity, Kim Libroth; Field Trips, Marvin Collins; Programs, Marvin Collins; Special Projects, Bob Henderson; St. Marks NWR Liaison, Robin Will; Ex-Officio, Sierra Club Liaison, Open; Webmaster, Hans Van Tol

2006-2007

Elizabeth Platt, President

Melissa Forehand, V-P; Harvey Goldman, Treasurer; Dawn Saucier, Secretary
Board: Jan Bordelon, Marvin Collins, Eric Draper, Lynn Reynolds, Elizabeth Vigil,
Nico Wienders, George Willson

Committees: Awards, ---; Banquet, Elizabeth Vigil; Bylaws Revision, Karen Wensing; Big Bend Environmental Forum Liaison, Bob Henderson; Conservation, Eric Draper; Development, Open; Education, Judy Goldman; Field Trips, Marvin Collins; Finance, Open; Hospitality, Jan Bordelon; Membership, Jan Bordelon; Newsletter, Lynn Reynolds; Population, Harvey Goldman; Programs, Elizabeth Vigil; Publicity, George Willson; Special Projects, Bob Henderson; Special Projects (2), Karen Wensing; St. Marks NWR Liaison, Robin Will; Ex-Officio, Sierra Club Liaison, Open; Webmaster, Hans Van Tol

2007-2008

Elizabeth Platt, President

Melissa Forehand, V-P; Harvey Goldman, Treasurer; Dawn Saucier, Secretary
Board: Marvin Collins, Eric Draper, Elizabeth Vigil, Nico Wienders

Committees: Awards, Tim Smith; Backyard Birding, Fran Rutkovsky; Banquet, Tim Smith; Big Bend Environmental Forum Liaison, Bob Henderson; Birding Spots Editor, Bob Henderson; Conservation, Marvin Collins; Development, Open; Audubon Adventures, Judy Goldman; Field Trips, Melissa Forehand; Finance, Open; Hospitality, Elizabeth Vigil; Membership, Pam Flynn; Newsletter, Ann Bruce; Population, Harvey Goldman; Programs, Melissa Forehand; Publicity, Julie Wraithmell; Special Projects, Bob Henderson; State Board Liaison, Eric Draper; St. Marks NWR Liaison, Robin Will; Ex-Officio, Sierra Club Liaison, Ben Fusaro; Webmaster, Hans Van Tol

2008-2009

Ben Fusaro, President

Ed Gartner, V-P; Harvey Goldman, Treasurer; Open, Secretary
Board: Elizabeth Platt, Past-President; Melissa Forehand, Harry Hooper, Lynn Reynolds, Karen Wensing
Committees: Audubon Adventures, Judy Goldman; Newsletter Editor, Ann Bruce; Programs, Melissa Forehand; Webmaster, John Boutelle

2009-2010

Ed Gartner, President

Harry Hooper, V-P; Harvey Goldman, Treasurer; Lynn Reynolds, Secretary
Board: Ben Fusaro, Past-President; Jan Bordelon, Chris Borg, Ann Bruce, Melissa Forehand, Karen Wensing
Committees: Audubon Adventures, Judy Goldman; Newsletter, Kathleen Carr; Webmaster, John Boutelle

2010-2011

Julie Wraithmell, President

Jan Bordelon & Elizabeth Platt, V-P; Harvey Goldman, Treasurer; Ann Bruce, Secretary
Board: Past-President, Ed Gartner; Chris Borg, Melissa Forehand, Ben Fusaro,
Dr. Seán McGlynn, Sunny Phillips, Leann Watts Williams
Committees: Audubon Adventures, Judy Goldman; Newsletter Editor, Kathleen Carr;
Webmaster, John Boutelle

AAS Logo Design, Charlotte Forehand

2011-2012

Julie Wraithmell (2011)/Kathleen Carr (2012), President
Kathleen Carr, V-P (2011); Harvey Goldman, Treasurer; Elizabeth Platt, Secretary
Board: Melissa Forehand, Ben Fusaro, Ed Gartner, Laurie Jones,
Mark Kiser, Selena Kiser, Dr. Seán McGlynn, Leann Watts Williams
Julie Wraithmell, Past-President (2012)
Committees: Audubon Adventures, Judy Goldman; Newsletter Editor, Suzanna MacIntosh;
Webmaster, John Boutelle

2012-2013

Kathleen Carr, President
Dr. Seán McGlynn, V-P; Harvey Goldman, Treasurer; Jan Bordelon, Secretary
Board: Nick Baldwin, Jim Cox, Ben Fusaro, Aubrey Heupel, Laurie Jones, Adrienne Ruhl,
Julie Wraithmell, Past-President
Committees: Audubon Adventures, Judy Goldman; Newsletter Editor, Suzanna MacIntosh;
Webmaster, Bob Henderson

*Conserving The World's Largest
and Deepest Freshwater Spring
<http://wakullasprings.org/>*

2013-2014

Dr. Seán McGlynn, President
Adrienne Ruhl, V-P; Harvey Goldman, Treasurer; Helen King, Secretary
Board: Nick Baldwin, Jim Cox, Ben Fusaro, Carol Franchi, Aubrey Heupel, Pat Press, Budd Titlow
Kathleen Carr, Past-President
Committees: Audubon Adventures, Judy Goldman; Newsletter Editor, Suzanna MacIntosh;
Webmaster, Bob Henderson

2014-2015

Adrienne Ruhl, President
Budd Titlow, V-P; Harvey Goldman, Treasurer; Helen King, Secretary
Board: Nick Baldwin, Kathleen Carr, Jim Cox, Ben Fusaro, Carol Franchi, Pat Press
Dr. Seán McGlynn, Past-President
Committees: Anniversary Celebration, Suzanna MacIntosh, Karen Wensing, Helen King, Dr. Seán McGlynn &
Budd Titlow; Audubon Adventures, Judy Goldman; Awards Committee, Nick Baldwin; Birdathon, Harvey
Goldman; Conservation Committee, Jan Bordelon & Elizabeth Platt; Education Committee Co-Chairs, Carol
Franchi & Pat Press; Field Trips, Helen King; Hospitality, Pam Flory & Elizabeth Platt; Membership, Kathleen
Carr; Nominating Committee, Dr. Seán McGlynn; Program Committee, Jim Cox; Publicity, Kathleen Carr; St.
Marks NWR Butterfly Pollinator Garden, Ann Bruce; Wildlife-Friendly Yards Tour Committee, Ann Bruce &
Tammy Brown; Newsletter Editor, Suzanna MacIntosh;
Parliamentarian, Ben Fusaro; Webmaster, Kathleen Carr

Our deepest gratitude goes to Dr. Huey Long for his invaluable help with the early history. He has lovingly shared his recollections of the men and women who helped found Apalachee Audubon along with information on founding goals and early activities. Dr. Long also searched for and found saved photographs from these first years to share. Many thanks also to Audubon Florida's Charles Lee for going the extra miles helping us locate the earliest AAS history; without his help we might never have known the founding dates and first leaders.

AAS is creating a special history section on our website and we would greatly appreciate your help correcting any errors, filling in any blanks, or helping in any way. ~ Karen Wensing and Suzanna MacIntosh